

Innovate
Educate
Advance

Siebel Foundation

The Thomas and Stacey Siebel Foundation, a nonprofit, public benefit corporation, was established as a private foundation in 1996. Its mission is to foster programs and organizations that improve the quality of life, environment, and education of its community members. The Siebel Foundation funds projects to support education, the homeless and underprivileged, public health, research, and development across the globe. The Siebel Foundation engages in strategic philanthropy; as such, it does not entertain grant requests, but invests in targeted, highly leveraged programs and in projects it founds and operates. Since 2000, the Siebel Foundation has granted **\$364,615,030** to various charitable causes.

Siebel Scholars

Founded in 2000, the Siebel Scholars program recognizes the most talented students at the world's leading graduate schools of business, computer science, bioengineering, and energy science, forming an active, lifelong community among an ever-growing group of leaders. Each year, more than 90 exceptional students are selected as Siebel Scholars based on academic merit and receive a \$35,000 award toward their final year of studies.

Over the last 19 years, the Siebel Scholars program has funded \$45 million in grants to top universities including Carnegie Mellon University; École Polytechnique; Harvard University;

Johns Hopkins University; Massachusetts Institute of Technology; Northwestern University; Politecnico di Torino; Princeton University; Stanford University; Tsinghua University; University of California, Berkeley; University of California, San Diego; University of Chicago; University of Illinois at Urbana-Champaign; University of Pennsylvania; and The University of Tokyo.

Today, over 1,400 of the world's brightest minds are Siebel Scholars. This formidable group of executives, entrepreneurs, researchers, and philanthropists directly influences the technologies, policies, and economic and social decisions that shape the future.

AN EXCEPTIONAL COMMUNITY

“Being named a Siebel Scholar is truly a mark of distinction, held by only a small percentage of the best and brightest among the top business and engineering schools.”

—A. Michael Spence, Former Dean,
Stanford University, Graduate School of Business,
2001 Nobel Laureate in Economics





Conference

Since 2000, Siebel Scholars have convened at conferences for an extraordinary opportunity to examine global issues with global heads of state, scientists, lawmakers, and experts in search of solutions to some of the world's most urgent problems.

The Siebel Scholars conferences are outcome-oriented. Our 2002 "Stem Cell Research and the Role of the State in Regulating the Economy" conference gave rise to the Siebel Stem Cell Institute and our 2010 "Energy and Climate" conference led to the creation of several initiatives that significantly advanced energy efficiency and security.

In 2019, our conference focused on the "Implications of Social Media," examining the mechanisms and implications of social media and exploring its potential dangers on critical domains such as privacy, security and public health as well as ethical and political consequences.

Held at The University of Chicago, the 2019 conference featured renowned researchers and political leaders including *The Age of Surveillance Capitalism* author Shoshana Zuboff, author of *iGen*, Jean M. Twenge, Ph.D., and Former Deputy Chief of Staff to President George W. Bush, Karl Rove.

Siebel Energy Institute

Founded in 2015, The Siebel Energy Institute is a global consortium for collaborative energy research, dedicated to accelerating and sharing advancements in machine learning applied to power systems and Internet of Things (IoT) infrastructures. Since its launch, the Institute has awarded \$2.9 million in research seed grant funding to engineering and computer science experts at consortium universities which has helped researchers secure \$52 million in large grant support for their work.

By funding cooperative and innovative research grants in data analytics, the Siebel Energy Institute aims to accelerate advancements in the safety, security, reliability, efficiency, and environmental integrity of energy and cyber-physical systems. Institute researchers collaborate with utilities and other companies to conduct pilot projects and joint research, development, and deployment of tools and methods.

The Institute has an Advisory Board of industry partners that drive active collaboration between the private sector, the Institute member universities, and researchers. Member universities include Carnegie Mellon University; École Polytechnique; Massachusetts Institute of Technology; Politecnico di Torino; Princeton University; Tsinghua University; University of California, Berkeley; University of Illinois at Urbana-Champaign; and The University of Tokyo.



STATE OF THE
SIEBEL ENERGY INSTITU
Digital Transformation: Smart Energy Systems a
Founded August 2015
SIEBEL
ENERGY INSTITUTE

“This investment in promising projects enables world-class researchers to advance energy science and have an impact on real-world applications.”

—Thomas M. Siebel Chairman,
Siebel Energy Institute

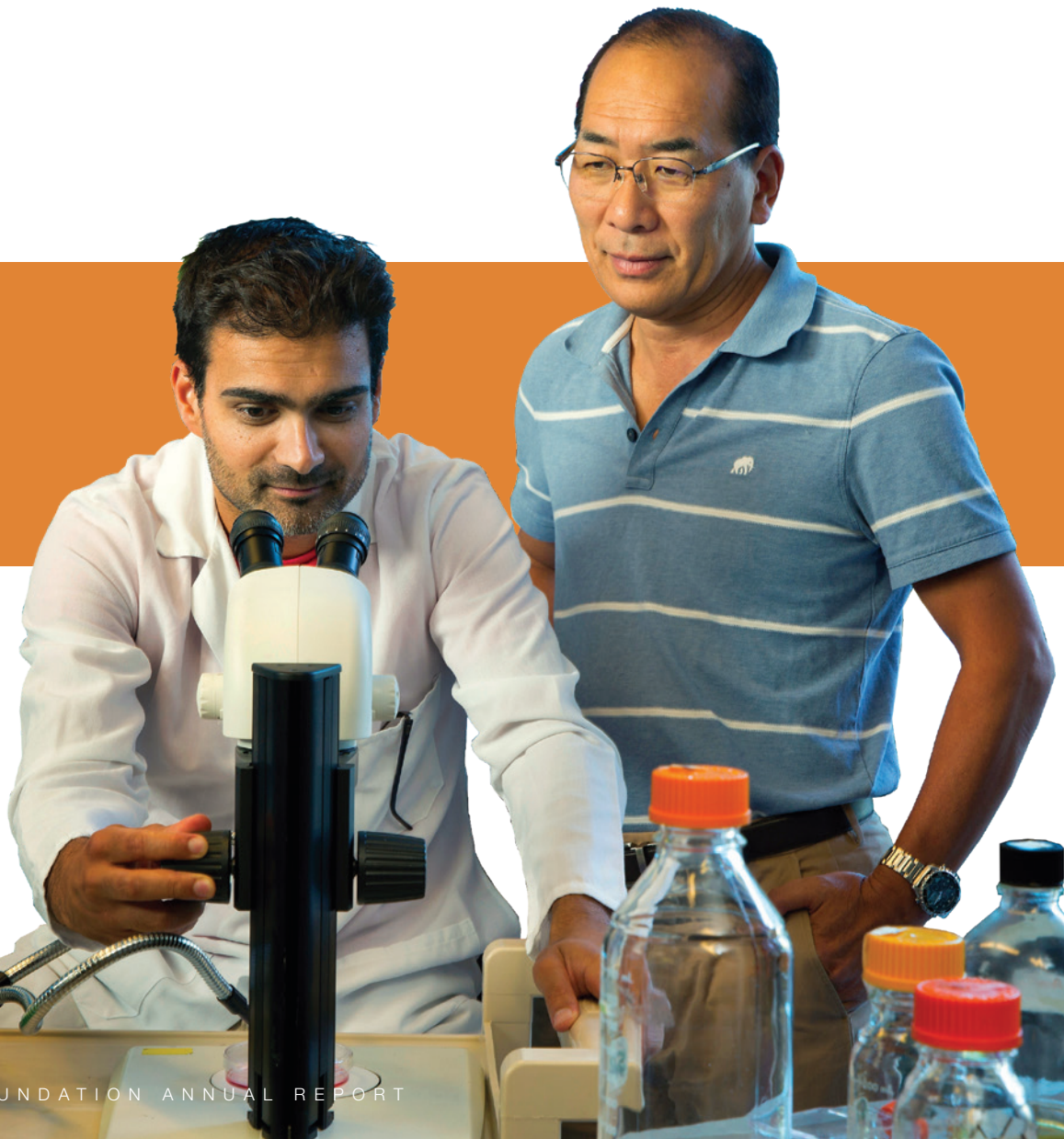
ADVANCING THE SCIENCE OF SMART ENERGY



Siebel Stem Cell Institute

Founded in 2008, the Siebel Stem Cell Institute has given \$15.5 million in funding to enable researchers at the University of California, Berkeley Stem Cell Center and the Stanford University Institute for Stem Cell Biology and Regenerative Medicine to share ideas and resources, and support investigators working at the forefront of stem cell biology. The Institute serves as a conduit for creative approaches to basic science research that can give rise to unanticipated advances in how we diagnose, treat, and prevent disease. Research pioneers at both institutions have made important advances in their efforts to push the boundaries of biomedical science.

COLLABORATIVE RESEARCH ACCELERATING ADVANCEMENTS IN STEM CELL BIOLOGY AND REGENERATIVE MEDICINE



2019 Achievements

- An immunotherapy conceived at the Institute for Stem Cell Biology and Regenerative Medicine appeared safe in an early clinical trial for patients with non-Hodgkin lymphoma. The experimental antibody, known as Hu5F9-G4, blocks the protein CD47, a “don’t eat me” signal that inhibits immune attacks on cancer cells. Half of the participants responded positively to the treatment, and about one-third went into complete remission from their cancer. The combination of rituximab and Hu5F-G4 has been shown to work well in fighting human cancers in animal models, but this was the first clinical trial of this therapy in humans.
- An antibody combination to eliminate defective hematopoietic (blood-forming) stem cells to prepare patients for their own pure stem cells that have been modified by CRISPR, a gene-editing system. (Note that pure hematopoietic stem cells are only at Stanford.) In mouse models using cell samples from people with Severe Combined Immunodeficiency (SCID), one of the most severe types of immunodeficiency disease, the researchers genetically altered the stem cells that give rise to blood and immune cells. Each mouse that received the edited cells began generating new immune cells and displayed no detectable adverse side effects.
- An antibody treatment that prepares mice for a transplant of blood and immune cells, even from an immunologically mismatched donor. Treating mice with a combination of six specific antibodies safely and efficiently eliminated several types of immune cells in the animals’ bone marrow. This allowed hematopoietic stem cells to engraft and begin producing blood and immune cells without the need for continued immunosuppression. Hematopoietic stem cell transplant opens the door to eventually increasing the availability of solid organs for transplant in humans.
- Discovered a way to grow large numbers of hematopoietic stem cells in the laboratory. For the first time, by rebuilding a fundamental laboratory process, they were able to expand the number of mouse blood-forming pluripotent stem cells. By tinkering with the components of the nutritive broth in which the cells are grown, they showed it is possible to coax hematopoietic stem cells to renew themselves hundreds or even thousands of times within just one month. Identifying the set of conditions that allows these cells to expand in number opens new opportunities in using hematopoietic stem cell transplants and gene therapy in humans.
- Developed an efficient, high-throughput approach for sophisticated mouse genome engineering called CRISPR-READI, with potential applications to other mammalian species.
- Advanced new methodologies in adaptive optics lattice light-sheet microscopy (AL-LLSM) to provide 3D “movies” of neuronal migration in the brain with unprecedented clarity and length, allowing researchers to better identify underlying causes—and potential interventions—for degenerative diseases.
- Revealed new insights into the molecular and cellular mechanisms underlying blood-brain barrier dysfunction that will help inform potential therapeutic interventions to treat neurodegenerative diseases such as Alzheimer’s and other dementias.
- Launched the Advanced Bioimaging Center to create MOSAIC (Multimodal Optical System with Adaptive Imaging Correction), which bundles several types of powerful imaging tools into a single microscope. For the first time, it allows scientists to view real-time video of how living cells function within transparent organisms using fluorescence, and removes the blurriness caused by surrounding cells and tissue.

Total Grants: \$364,615,030



\$73,075,104

The Salvation Army to supply food and shelter to the homeless and those in need. Regional grants include: \$18,650,884 in San Jose, CA; \$18,649,784 in San Francisco, CA; \$9,237,218 in New York, NY; \$8,550,000 in Great Falls, MT; \$8,550,000 in Helena, MT; \$5,600,000 in Billings, MT; \$1,837,218 in Palm Desert, CA; \$1,750,000 in Carmel, CA; and \$250,000 in Brunswick, GA.



\$61,948,712

University of Illinois at Urbana-Champaign to design and construct the Siebel Center for Design, a campus-wide hub for student-focused design thinking and learning, and a state-of-the-art research and education facility for the Department of Computer Science, to establish endowments for the Thomas M. Siebel Chair in the History of Science and the Thomas M. Siebel Chair in Computer Science, and to support academic and scholarship programs.



\$60,107,772

Siebel Scholars Foundation to promote excellence and create an active community of outstanding graduate students and leaders from the world's top bioengineering, business, computer science, and energy science schools.

THE METH PROJECT

\$30,386,917

The Meth Project to develop and fund a large-scale prevention program aimed at significantly reducing methamphetamine use.

Stanford University

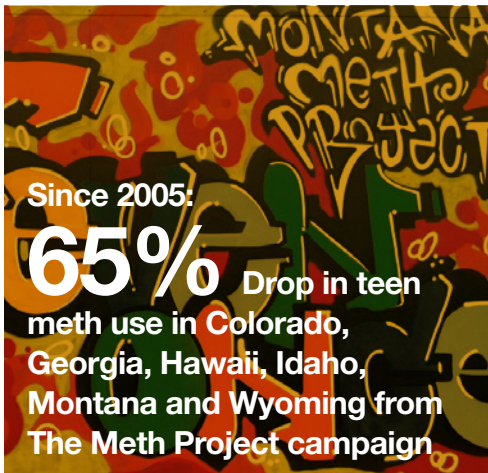
\$15,614,050

Stanford University to support academic, scholarship, and athletic programs at Stanford University, to establish the Thomas M. Siebel Professorship in Machine Learning, and to build world-class golf and football practice facilities for the Stanford University Golf and Football teams.

Siebel Stem Cell Institute

\$15,500,000

Siebel Stem Cell Institute to establish an innovative, joint stem cell research program between the University of California, Berkeley, Stem Cell Center and the Stanford Institute for Stem Cell Biology and Regenerative Medicine.



\$11,508,387

Princeton University to fund the Princeton Energy Grand Challenge project to address the reduction of energy demand through technology and social change, to establish the Thomas M. Siebel Chair in the History of Science, and to support academic and scholarship programs.



\$8,067,000

Siebel Energy Institute to support research that accelerates and shares advancements in machine learning applied to modern energy systems and Internet of Things (IoT) infrastructures.



\$7,942,850

Menlo School to support the academic, fine arts, and athletic programs at the Menlo School, and to fund the design and construction of new academic facilities.



\$7,600,760

University of California, Berkeley to support academic and scholarship programs at the University of California, Berkeley, and to establish the Thomas M. Siebel Chairs in Computer Science and the History of Science.



\$7,600,000

County of San Mateo to support the San Mateo County Sheriff's Office and the construction of a training facility at the Coyote Point Recreation Area.



\$6,386,300

National Center for Equine Facilitated Therapy to provide a premier equestrian facility in support of therapeutic programs for people with disabilities, and establish an endowment to fund ongoing maintenance.



\$6,139,784

Robin Hood Foundation to provide funding to house, feed, and educate needy children and adults in New York City, including grants to construct a new facility for St. John's Bread and Life—the largest soup kitchen in Brooklyn—and to establish a premier teacher-training institute and education fund.



Massachusetts Institute of Technology

\$6,000,000

Massachusetts Institute of Technology to support academic and scholarship programs at the Massachusetts Institute of Technology and to establish the Thomas M. Siebel Distinguished Professorship in Machine Learning.



\$5,184,900

Eastside College Preparatory School to fund the development of new dormitory facilities and fund scholarships for underprivileged students in the East Palo Alto, CA, community who do not have a safe, supportive environment in which to live and study.



\$3,929,969

USMMA Sailing Foundation to provide sailing equipment.



\$3,691,091

Palo Alto Medical Foundation to fund research in distance medicine and the expansion of the Encina Medical Center, a new facility providing high-quality medical care.



\$3,500,000

United States Sailing Foundation to provide sailing access, training, and education.



\$3,069,391

Siebel America Fund to support the Red Cross and The Salvation Army 9/11 relief efforts following the terrorist attacks on the World Trade Center and the Pentagon.

SIEBEL
ENERGY PRIZE

\$2,430,189

Siebel Energy Prize Foundation to fund the development of an incentive prize to inspire and reward innovative energy solutions that show promise to affect significant economic change.



\$2,368,500

American Enterprise Institute to fund research and education on issues of government, politics, economics, and social welfare.



\$2,340,000

Dearborn Scholarship Fund to provide merit-based college scholarships for the children of active officers of the Montana Highway Patrol and Montana Department of Fish, Wildlife & Parks.

LAPHAM'S
QUARTERLY

\$2,311,000

American Agora Foundation to support the literary magazine Lapham's Quarterly and programs to promote an understanding and appreciation of history.



\$2,275,000

Museum of the Rockies to design and build the Siebel Dinosaur Complex, home to one of the finest paleontology collections in North America.



\$1,420,000

Hoover Institution to support policy oriented research and programs devoted to the advanced study of politics, economics, political economy, and international affairs.

AMERICAN ACADEMY
OF ARTS & SCIENCES

\$1,301,000

American Academy of Arts and Sciences to support scholarship, civil dialogue, and useful knowledge to address critical challenges facing our global society.



\$1,290,977

American Red Cross to support the Hurricane Katrina Relief Fund and to establish the Fund for Haiti to support relief efforts in Haiti following the January 12, 2010, earthquake.



\$1,250,000

The University of Chicago to support the University of Chicago's programs and facilities campus-wide in order to recruit and retain leading faculty, attract top students, and fund academic research and scholarship programs.



\$1,000,000

United Way of Coastal Georgia to provide opportunities for all individuals to achieve their maximum potential through education, income stability and health.

\$762,800 Monterey Peninsula Foundation to support local charities in the Monterey Peninsula, CA.	\$644,316 Lucile Packard Foundation for Children's Health to support the Lucile Packard Children's Hospital at Stanford.	\$575,000 San Francisco First Tee to support at-risk youth by providing education programs that build character, instill values, and promote healthy choices through golf instruction.	\$413,376 Woodside School Foundation to support academic programs at the Woodside School.
\$371,400 Vista Center for the Blind and Visually Impaired to promote independence and improve quality of life for those with severe vision loss.	\$340,000 Siebel Scholars Impact Award to inspire, reward, and accelerate Siebel Scholars' philanthropic initiatives that demonstrate promise for significant societal change.	\$330,000 Children of the Dump to provide food, shelter, and medical supplies to homeless and impoverished children in Puerto Vallarta, Mexico.	\$320,000 Children's Shelter of Hope Foundation to fund homeless shelters and day care facilities for needy children in Puerto Vallarta, Mexico.
\$300,000 Great Falls Soccer Foundation to support the high school soccer programs in Great Falls, MT.	\$300,000 New York Yacht Club Foundation to support the restoration of the organization's historically and architecturally significant buildings.	\$250,000 African Leadership Academy to help enable lasting peace and prosperity in Africa by developing and connecting the continent's future leaders.	\$250,000 UC Regents to govern the board of the University of California.
\$225,500 Philanthropy Roundtable to support programs aimed at fostering excellence in philanthropy, protecting philanthropic freedom, and assisting donors.	\$225,000 Montana Game Warden's Association to support activities dedicated to the preservation, enhancement, and protection of Montana's fish, wildlife, and parks resources.	\$225,000 Montana Trout Unlimited to preserve, protect, and restore Montana's cold water fisheries and their watersheds.	\$208,100 The Horse Park at Woodside to support equestrian programs aimed at encouraging the growth and development of youth in Woodside, CA.
\$200,000 Covenant Village of Northbrook to support programs and activities at the Covenant Village of Northbrook, IL.	\$190,000 San Mateo Historical Society to support ongoing programs to preserve the history of San Mateo County, CA.	\$188,500 Augusta Volunteer Ambulance Services to provide emergency services for the Augusta, MT, community.	\$178,000 Florence Crittenton Home to assist in the development of a new home for at-risk adolescent girls in Helena, MT.
\$120,000 Santa Barbara Museum of Natural History to support educational programs at the museum.	\$100,000 Corona Chamber Foundation to provide financial assistance to those experiencing economic hardship in the Corona, CA, community.	\$100,000 Montana Historical Society to support the significant historic, archaeological, and cultural preservation efforts of the Montana Historical Society.	\$100,000 Siebel Soccer Fields to fund the construction of soccer fields for the Helena, MT, community.

Statement of Financial Position

December 31, 2019

ASSETS

Investments, at fair market value:

Unrestricted securities	\$116,051,624
-------------------------	---------------

Total Investments	\$116,051,624
--------------------------	----------------------

Cash and cash equivalents	\$ 28,268,330
---------------------------	---------------

Other assets	\$ 87,243
--------------	-----------

Total Assets	\$144,407,197
---------------------	----------------------

LIABILITIES AND UNRESTRICTED NET ASSETS

Total liabilities	\$ 27,464
-------------------	-----------

Unrestricted net assets	\$144,379,733
-------------------------	---------------

Total Liabilities and Unrestricted Net Assets	\$144,407,197
--	----------------------

Statement of Activities

For the Year Ended December 31, 2019

INCOME

Dividends and interest	\$ 3,337,920
------------------------	--------------

Gain/loss on investments	\$ 12,538,582
--------------------------	---------------

Total Income	\$ 19,989,971
---------------------	----------------------

EXPENDITURES

Donations*	\$ 20,097,969
------------	---------------

Salaries and benefits	\$ 90,294
-----------------------	-----------

Federal taxes	\$ 224,935
---------------	------------

Investment management fees	\$ 279,529
----------------------------	------------

Other expenditures	\$ 280,062
--------------------	------------

Total Expenditures	\$ 20,972,789
---------------------------	----------------------

*Reflects donations from the Siebel Foundation and private gifts.

